



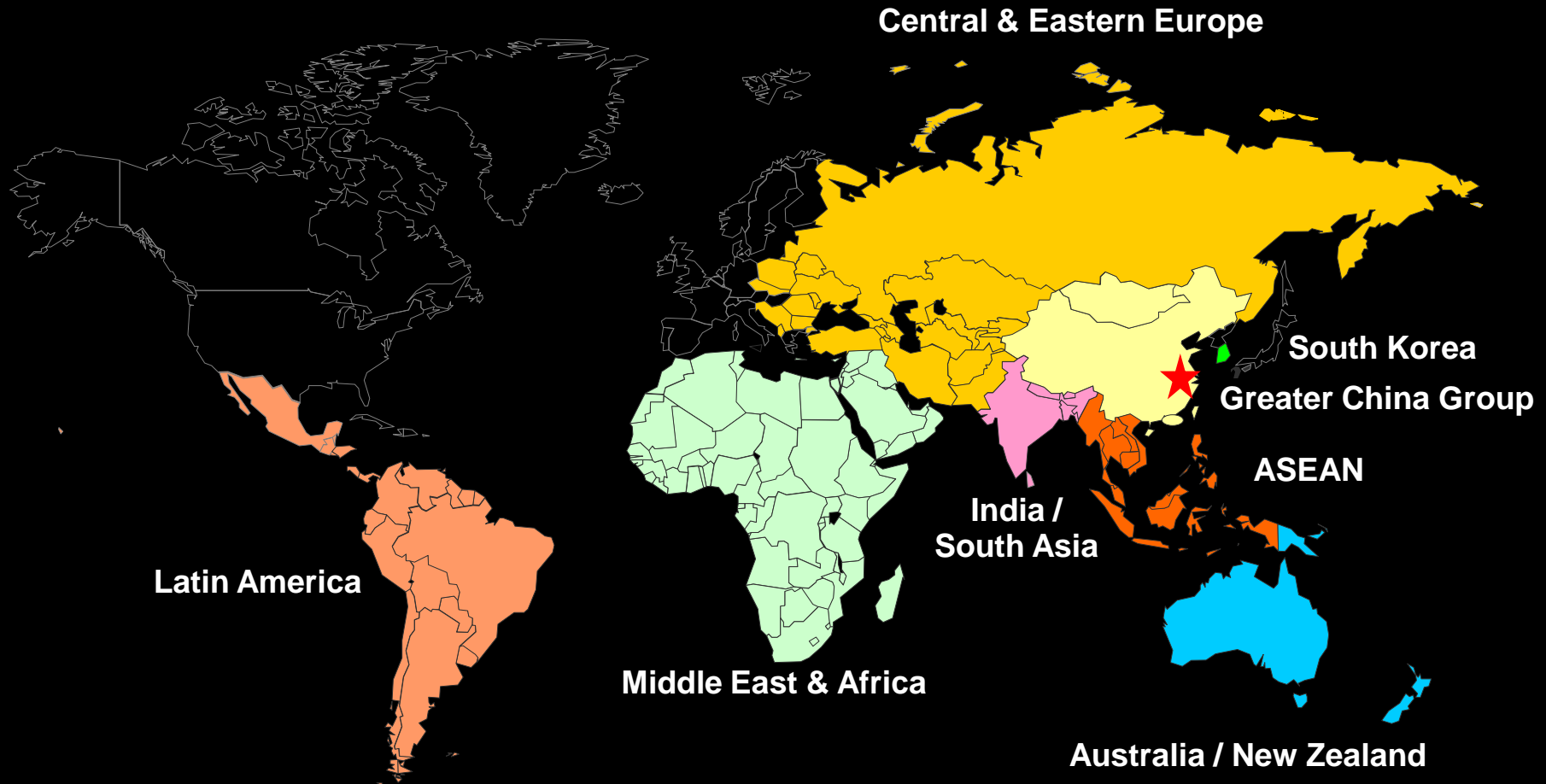
16th Americas Conference on Information Systems

Welcome to the Decade of Smart

Bruno Di Leo
General Manager, IBM Growth Markets



IBM in Growth Markets: over 140 countries



We are experiencing the reality of global integration



The World is Connected

Economically
Socially
Technically

A Series of Shocks

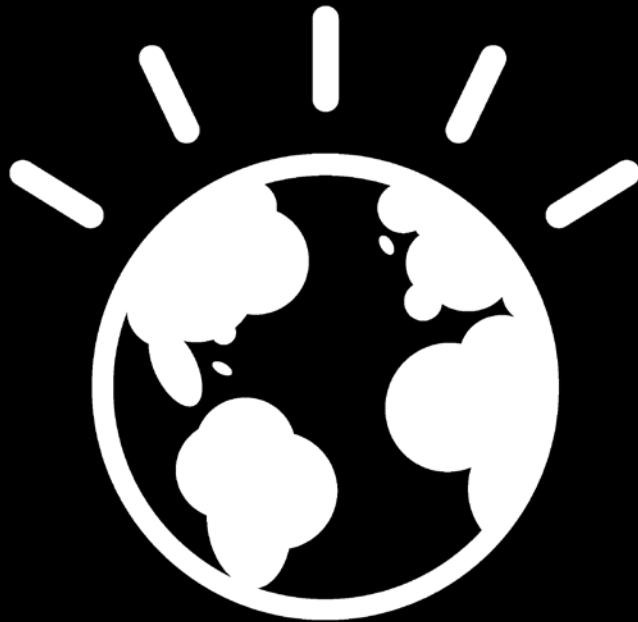
Climate change
Energy geopolitics
Global supply chains
Financial crisis

Evolving Trends

Changing demographics
Empowered citizens
Impact of technology

Why Smarter Planet?

Because something meaningful is happening.



The world is

SMALLER.

The world is

FLATTER.

The world is about to get a whole lot

SMARTER.

...because intelligence is being infused into the way the world works.



Our world is becoming

INSTRUMENTED



Our world is becoming

INTERCONNECTED



Virtually all things, processes and ways of working are becoming

INTELLIGENT

We now have the ability to measure, sense and monitor the condition of almost everything.

30 billion

In 2010, 30 billion RFID tags will be embedded into our world and across entire ecosystems.

1 billion

In 2010, there will be more than 1 billion camera phones in existence.

85%

Nearly 85% of new automobiles will contain event data recorders in 2010.



Instrumented



Interconnected



Intelligent



People, systems and objects can communicate and interact with each other in entirely new ways.

2 billion

There will be an estimated 2 billion people on the internet by 2011.

5 billion

There are an estimated 5 billion mobile phone subscribers worldwide.

1 trillion

Soon, there will be 1 trillion connected devices in the world, constituting an "internet of things."



Instrumented



Interconnected



Intelligent



We can respond to changes quickly and accurately, and predict and optimize for future events.

15 petabytes

Every day, 15 petabytes of new information are being generated. This is 8x more than the information in all U.S. libraries.

1 petaflop

Scientists are working to prevent influenza pandemics by modeling the viruses with a supercomputer that can operate at one petaflop, or one quadrillion operations per second.

1 square kilometer

New analytics enable high-resolution weather forecasts for areas as fine as 1 to 2 square kilometers.



Instrumented



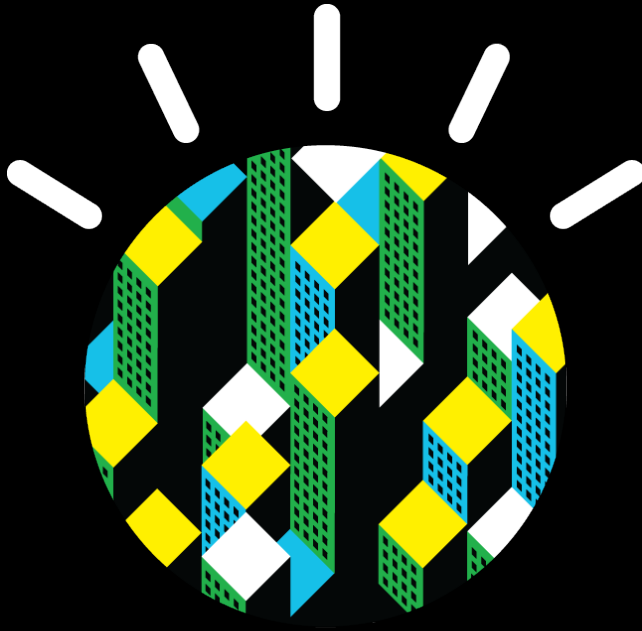
Interconnected



Intelligent



Building a Smarter Planet



The key precondition for

REAL CHANGE

now exists.

A period of discontinuity is a period of

OPPORTUNITY

for those with courage and vision.

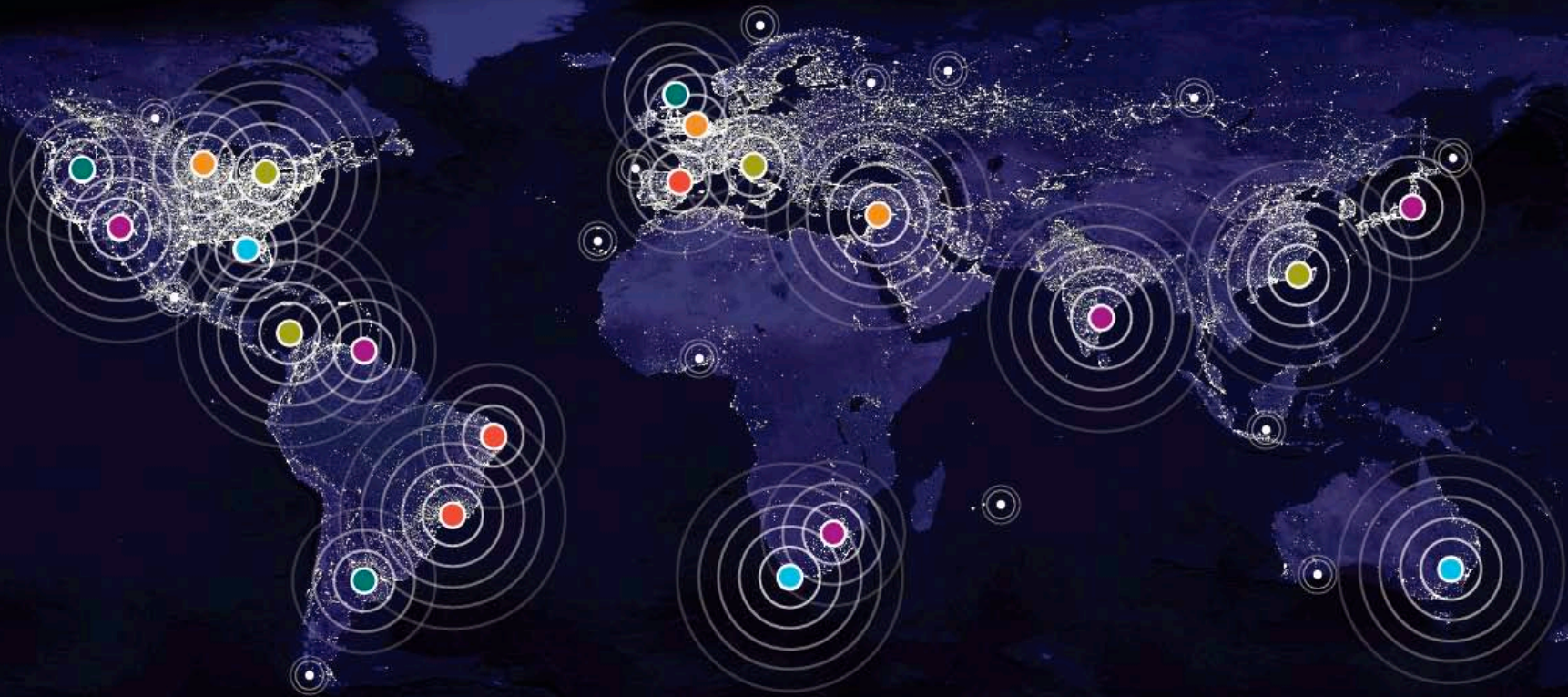
There will be

WINNERS,

and there will be losers.

A planet of cities

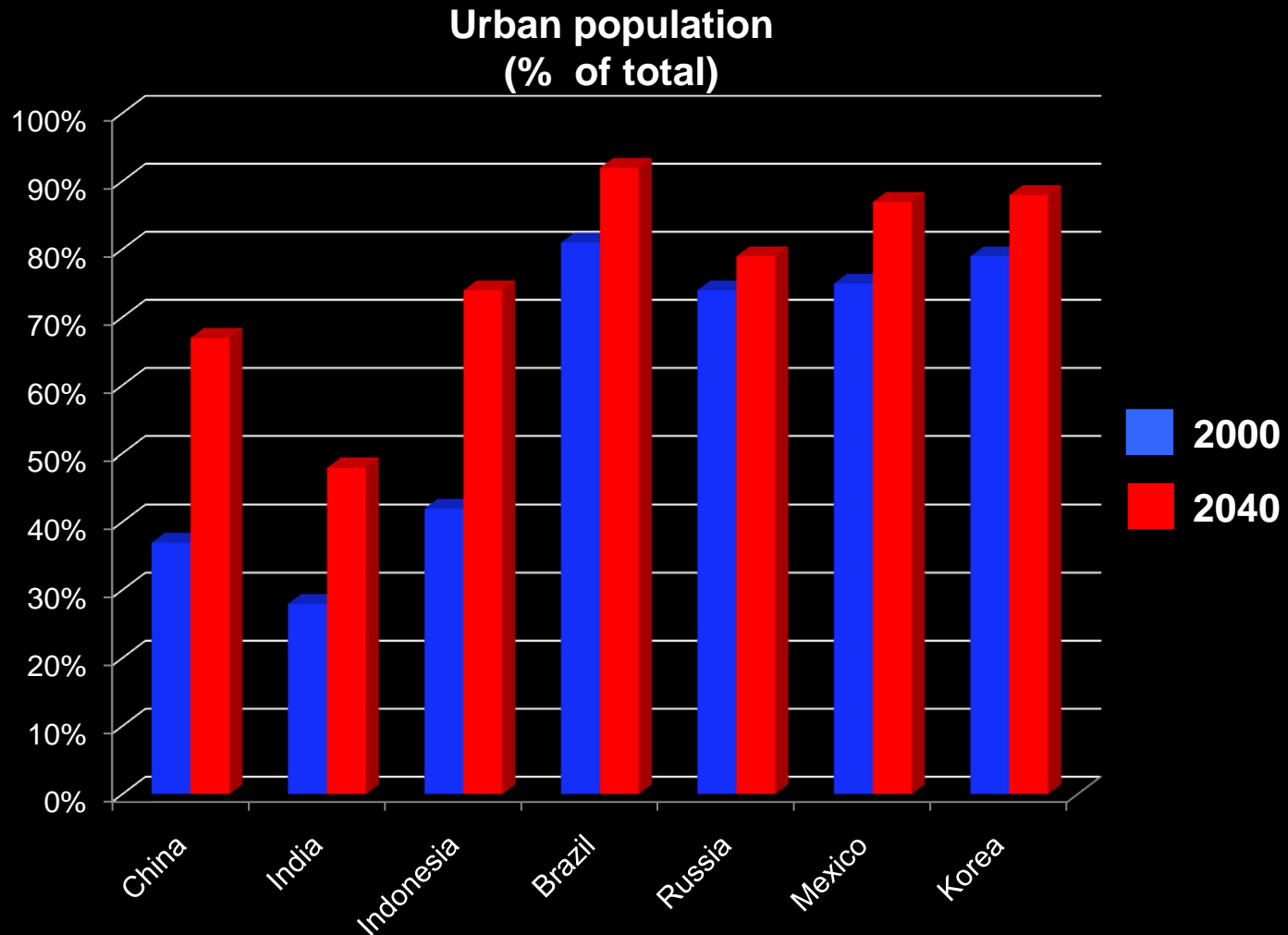
In 2007, for the first time, the majority of the world's population – 3.3 billion people – lived in cities. By 2050, city dwellers will make up 70% of Earth's total population, 6.4 billion people.



What draws us to cities?

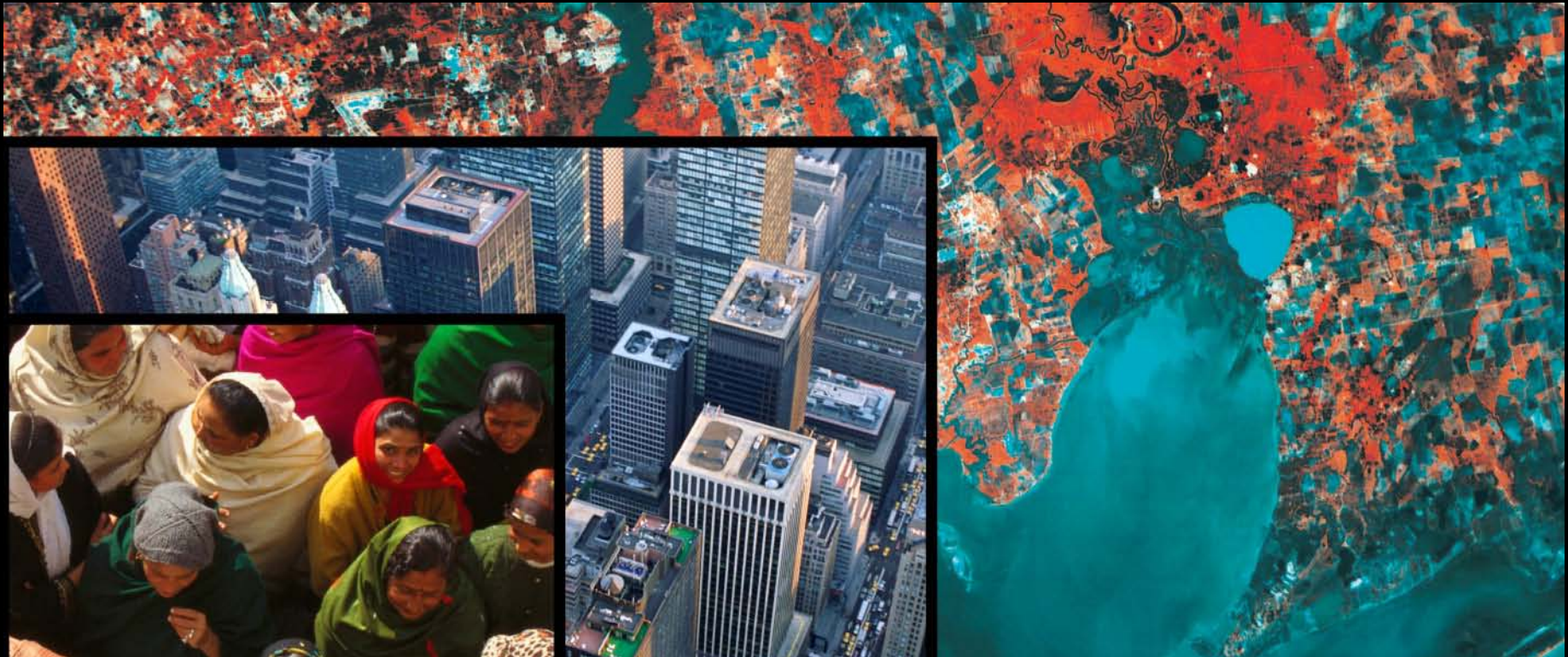
OPPORTUNITY

Urbanization is a key driver for investments



Time to act for smarter cities

Cities – more than states, provinces or nations – serve as crucibles for the success or failure of our planet.



The need for progress is clear



U\$
170 B

Kilowatt-hours wasted each year by consumers due to insufficient power usage information.



6X

Increase in global water usage since the 1900s, twice the rate of human population growth



U\$ 3,7B lost hours

U\$ 2,3B billion gallons of gas

Annual impact of congested roadways in the U.S. alone.



U\$
40B

Annual consumer product and retail sales lost due to supply chain inefficiencies

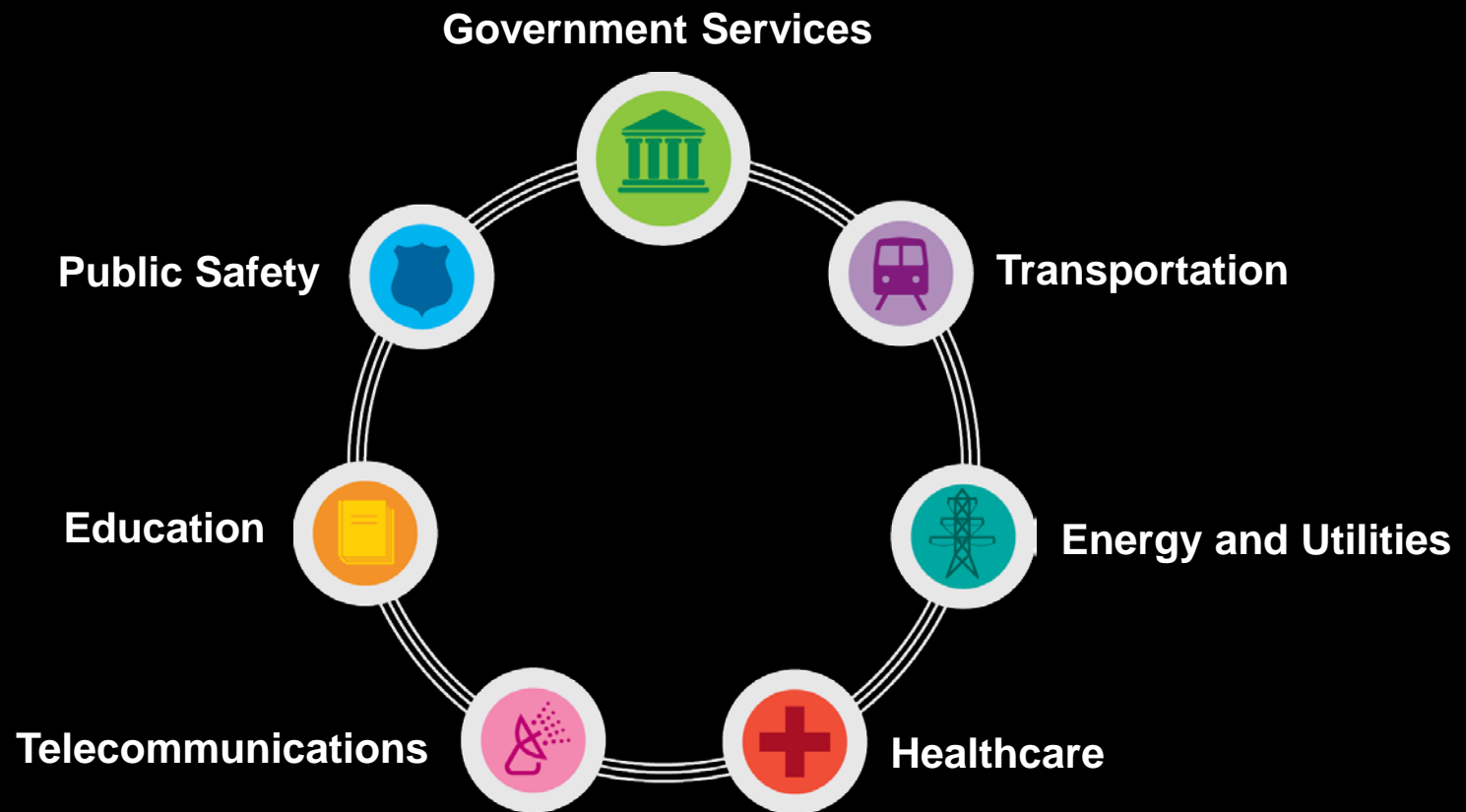


U\$
4T

Average daily volume in the world's currency markets

The city – a microcosm of challenge and opportunity

System of systems where man-made and natural interact



Smarter public safety **US**



Memphis (TN) Police department

- Reduces serious crime **31%**
- Evaluates incident patterns in the city
- **Forecasts criminal 'hot spots'** to proactively allocate resources and deploy personnel

Smarter food **UK**



Allied Mills, manufacturer of food ingredients

- reduces corrective and emergency maintenance from **39% to 9%**
- **proactively determines** when and where equipment may break down.

Smarter energy US



Covanta energy company

- **+400%** preventive & proactive maintenance
- Record **91.6%** average 'energy-to-home' availability
- **-10%** total downtime
- **-22%** unscheduled downtime

Smarter energy Denmark



DONG Energy

- **20-25%** reduced outage minutes
- **33%** less fault search time
- **90%** estimated capital savings



Smarter transportation

Stockholm



Stockholm intelligent toll charge system

- 20% less traffic,
- 40% lower emissions
- +40,000 users of the public transport



Smarter farming

US



Sun World

- 20% reduced fuel use by matching equipment to farming job & conditions
- 8% increase farm labor efficiency
- 8.5% decreased water usage



SMARTER LOS OLIVOS, PERU

IBM is helping the municipality of Los Olivos in Lima to connect public schools, police stations, hospitals, universities, fire departments, and healthcare centers.

Automates citizen service delivery to **60K homes**.

Monitors traffic lights, security cameras, water meters and electrical to detect problems and take action.

Centralizes decision making, cuts costs.

Intelligence is being infused into the way the world works.



Our world is becoming

INSTRUMENTED



Our world is becoming

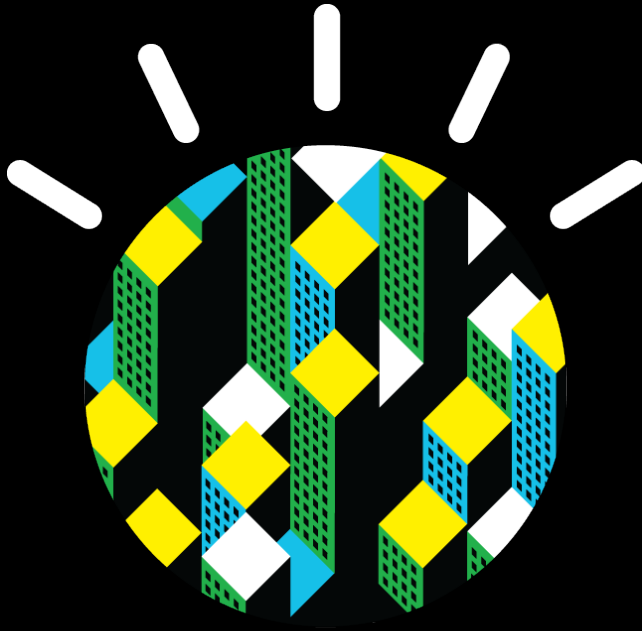
INTERCONNECTED



Virtually all things, processes and
ways of working are becoming

INTELLIGENT

Building a Smarter Planet is about Leadership



The key precondition for

REAL CHANGE

now exists.

A period of discontinuity is a period of

OPPORTUNITY

for those with courage and vision.

There will be

WINNERS,

and there will be losers.

Leadership in a Smarter Planet

2010 CEO Study: Today's **complexity** foreshadows an even more complex future

60% of CEOs are experiencing high level of complexity

79% of CEOs expect more complexity over next 5 years

ONLY 49% feel prepared for expected complexity

Essentials for the next generation leaders



Global collaborators



Shaped like a T



Factual-based decision-makers



Build the Intelligent Enterprise

Essentials for the next generation leaders



Global collaborators



Shaped like a T



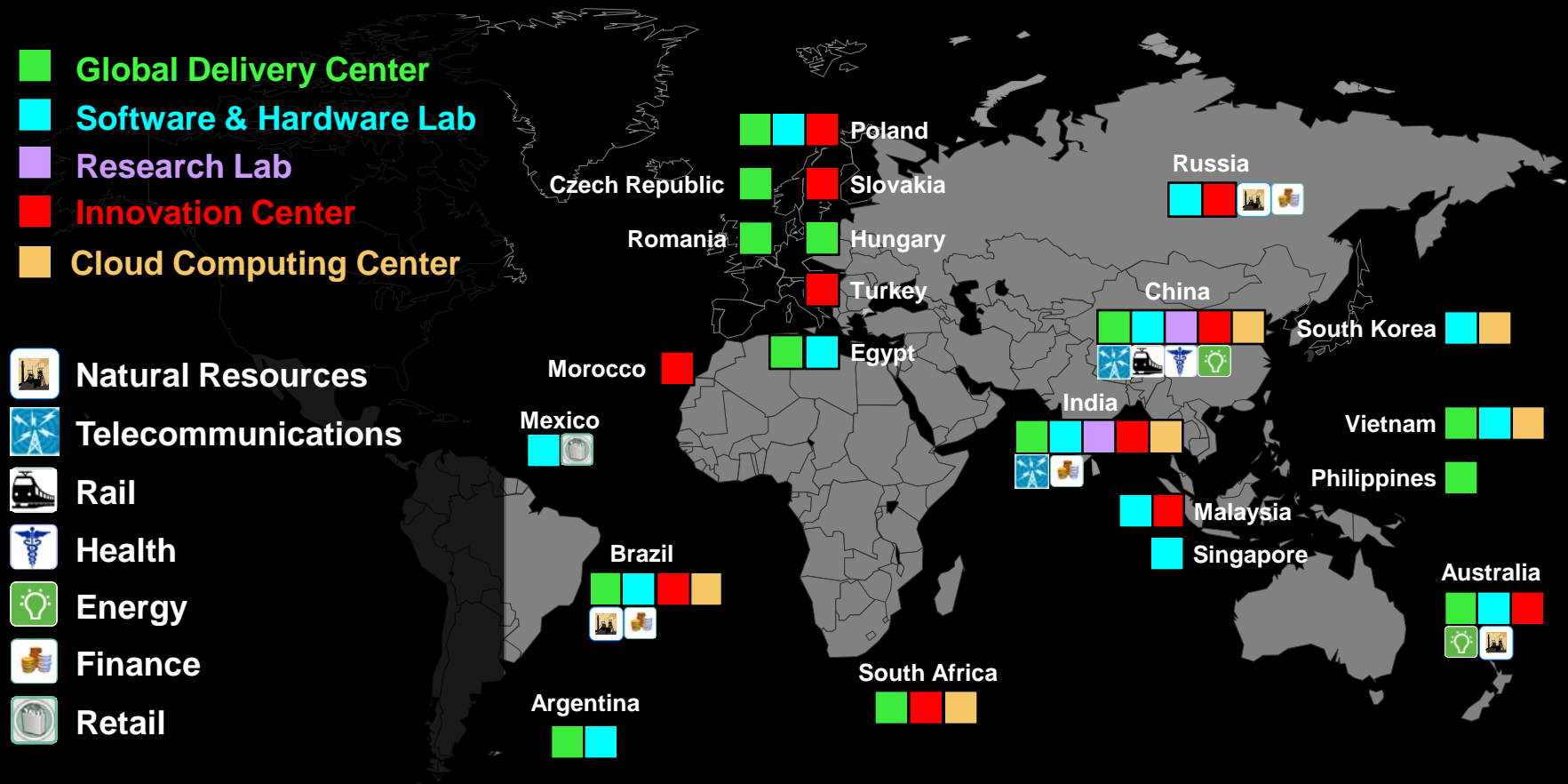
Factual-based decision-makers



Build the Intelligent Enterprise

Collaboration at IBM

The Globally Integrated Enterprise



Essentials for the next generation leaders



Global collaborators



Shaped like a T

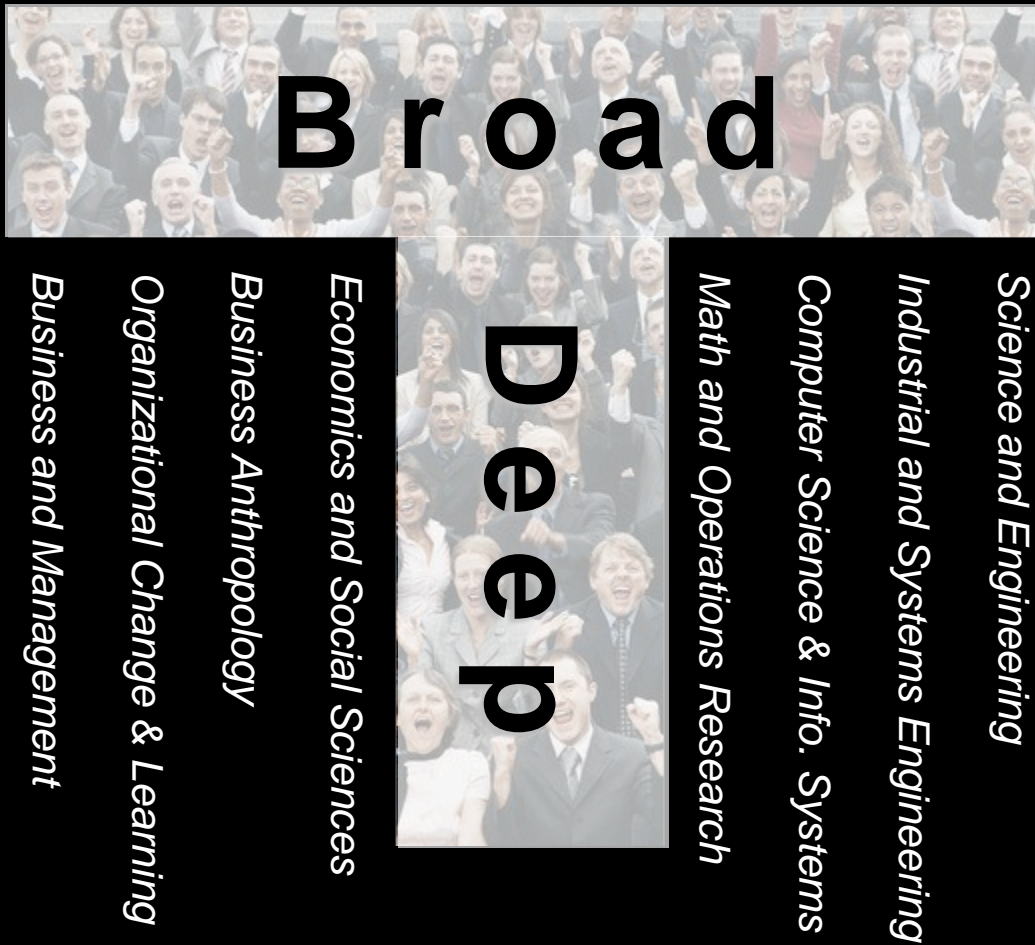


Factual-based decision-makers



Build the Intelligent Enterprise

Smarter Planet leaders are interdisciplinary



www.ibm.com/university/ssme

Service Science, Management and Engineering

Tags for this space: [engineering](#), [management](#), [science](#), [service](#), [service_science](#), [ssme](#)

Introduction | Learn | Teach | Collaborate | Events | Skills | Smarter Planet

Articles	Transportation	Energy & Grid / Carbon
<ul style="list-style-type: none"> · Environmental News Network: Intelligent Design? Utilities Embrace An Efficiency Evolution · EnergyBiz: Intelligent Enterprises and Intelligent Grids Require Intelligent Communications · Montgomery Research: The Emergence of the Intelligent Utility: A New View of Service Delivery · Carbon Disclosure Project: Making Advances in Carbon Management Best practice from the Carbon Information Leaders A Joint CDP and IBM Study · Supply & Demand Chain: Mastering Carbon Management Balancing tradeoffs to optimize supply chain efficiencies · pe Power & Energy: Intelligent utilities: the time is here for the next step 	<ul style="list-style-type: none"> · RITA: RITA – Research and Innovative Technology Administration Focus areas and initiatives Communities, documents, articles on ITS · ITSA: Intelligent Transportation Society of America; Private and public members including universities · ITS: University of Washington · IEEE ITS Society · MIT: ITS program · ITS Institute: University of Minnesota · Library of Congress: ITS Quick Study · ITS Lab: at Portland State University · Turner-Fairbank Highway Research Center 	<ul style="list-style-type: none"> · NASA · Carbon Management Council · Berkeley Lab Earth Sciences Division · Urban and Regional Carbon Management · Ohio Agricultural Research and Development Center, Carbon management and Sequestration Center · Lawrence Livermore Lab · US Dept of Energy: Carbon Sequestration Focus Areas Carbon management Science · MIT Energy Initiative, Carbon Management · University of East Anglia, MBA in Carbon Management

SSME Foundational Skills

- Communications across disciplines
- Service design
- Service management
- Service system modeling
- Service strategy through understanding value co-creation
- Service lifecycles to ensure quality
- Service supply and demand management
- Business project management
- Creative and critical thinking, analysis and synthesis.
- Business best practices
- Leadership, collaboration, and teaming.
- Business case development and analysis
- New service offerings.
- Organizational change management
- Knowledge of marketing and sales

Essentials for the next generation leaders



Global collaborators



Shaped like a T



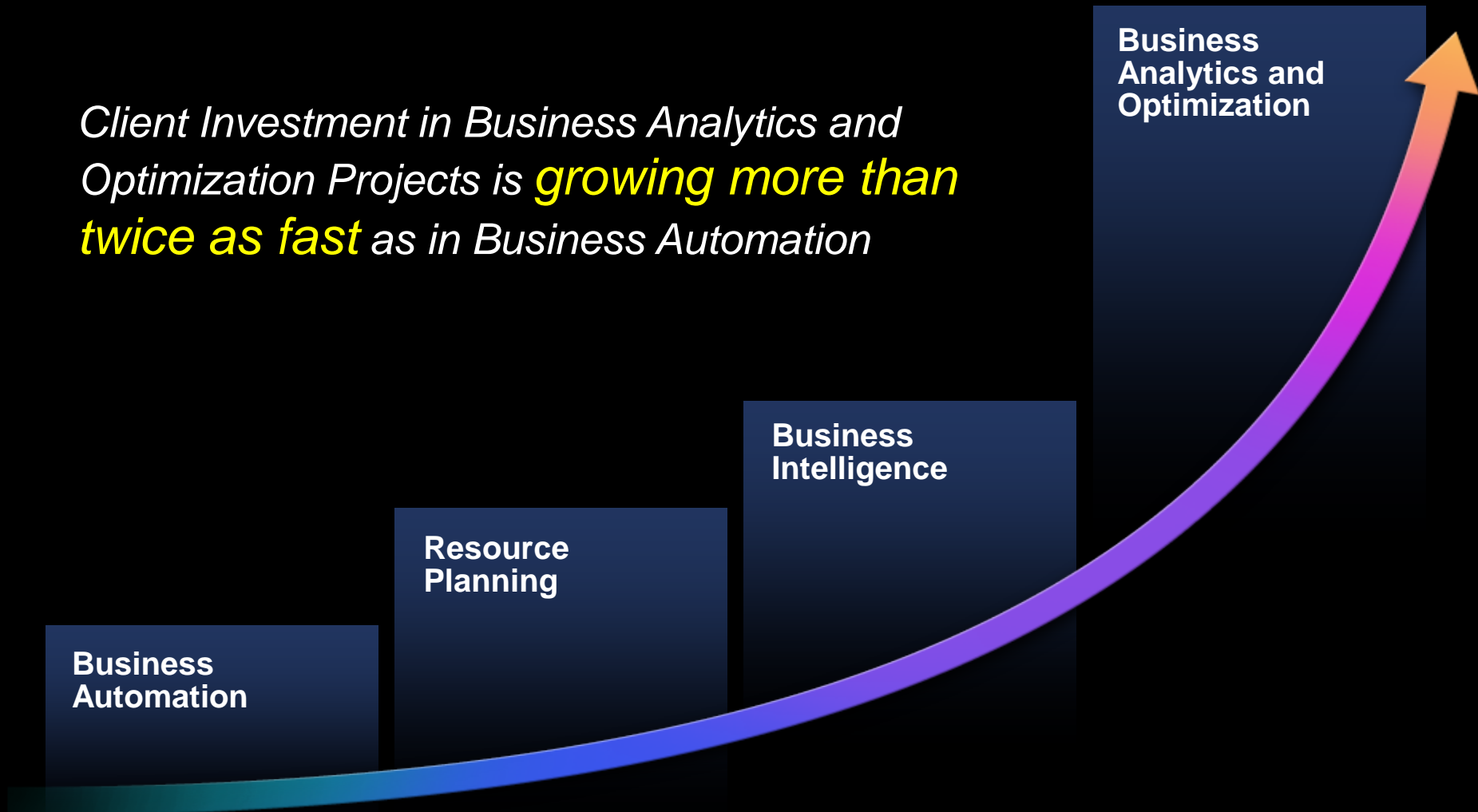
Factual-based decision-makers



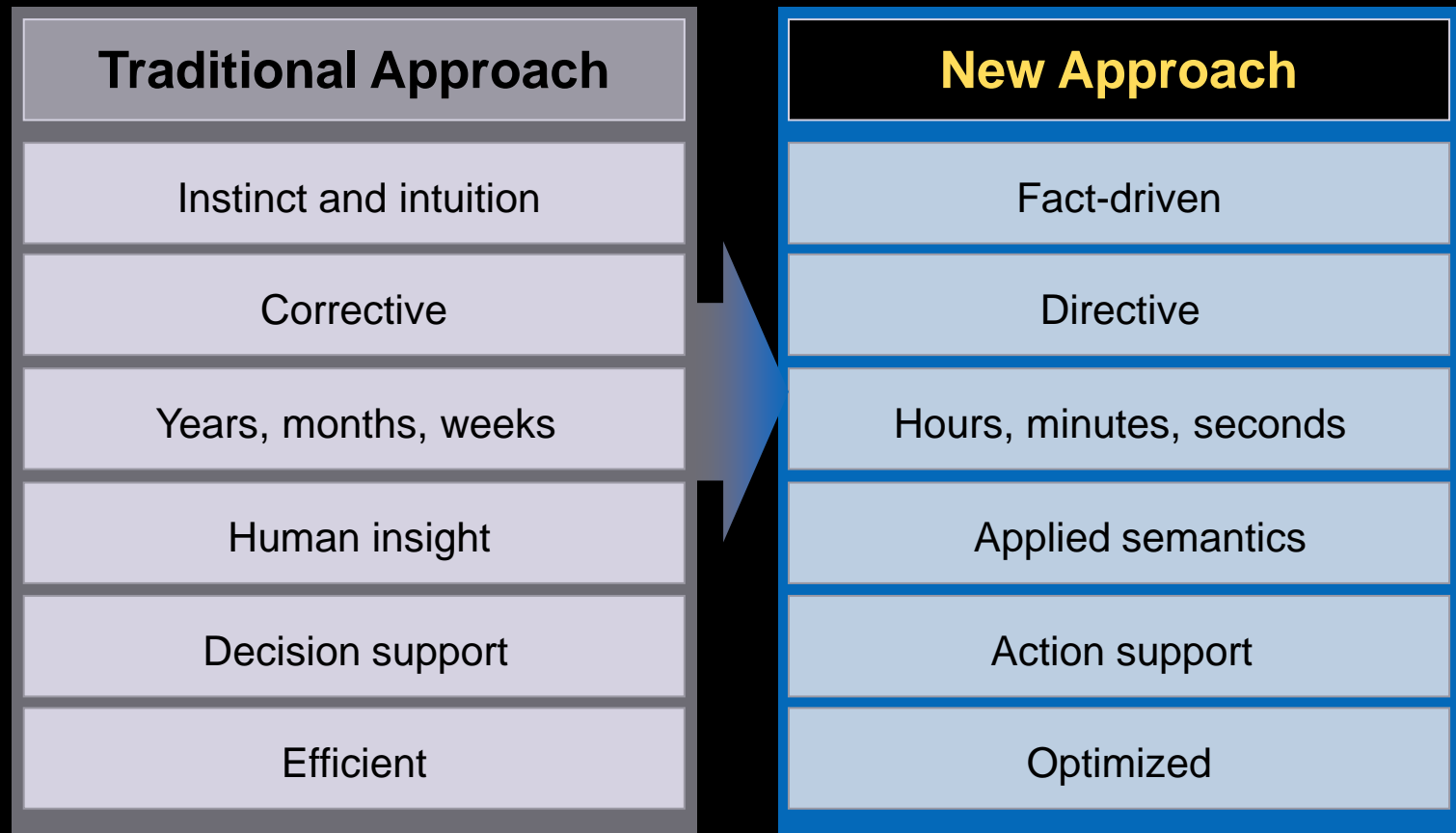
Build the Intelligent Enterprise

Business Analytics and Optimization

*Client Investment in Business Analytics and Optimization Projects is **growing more than twice as fast** as in Business Automation*



Organizations need ways to improve speed to insight and speed to impact



Source: Source: *Business Analytics and Optimization for the Intelligent Enterprise*, April 2009. <http://www-935.ibm.com/services/us/gbs/bus/pdf/gbe03211-usen-00.pdf>

Essentials for the next generation leaders



Global collaborators



Shaped like a T

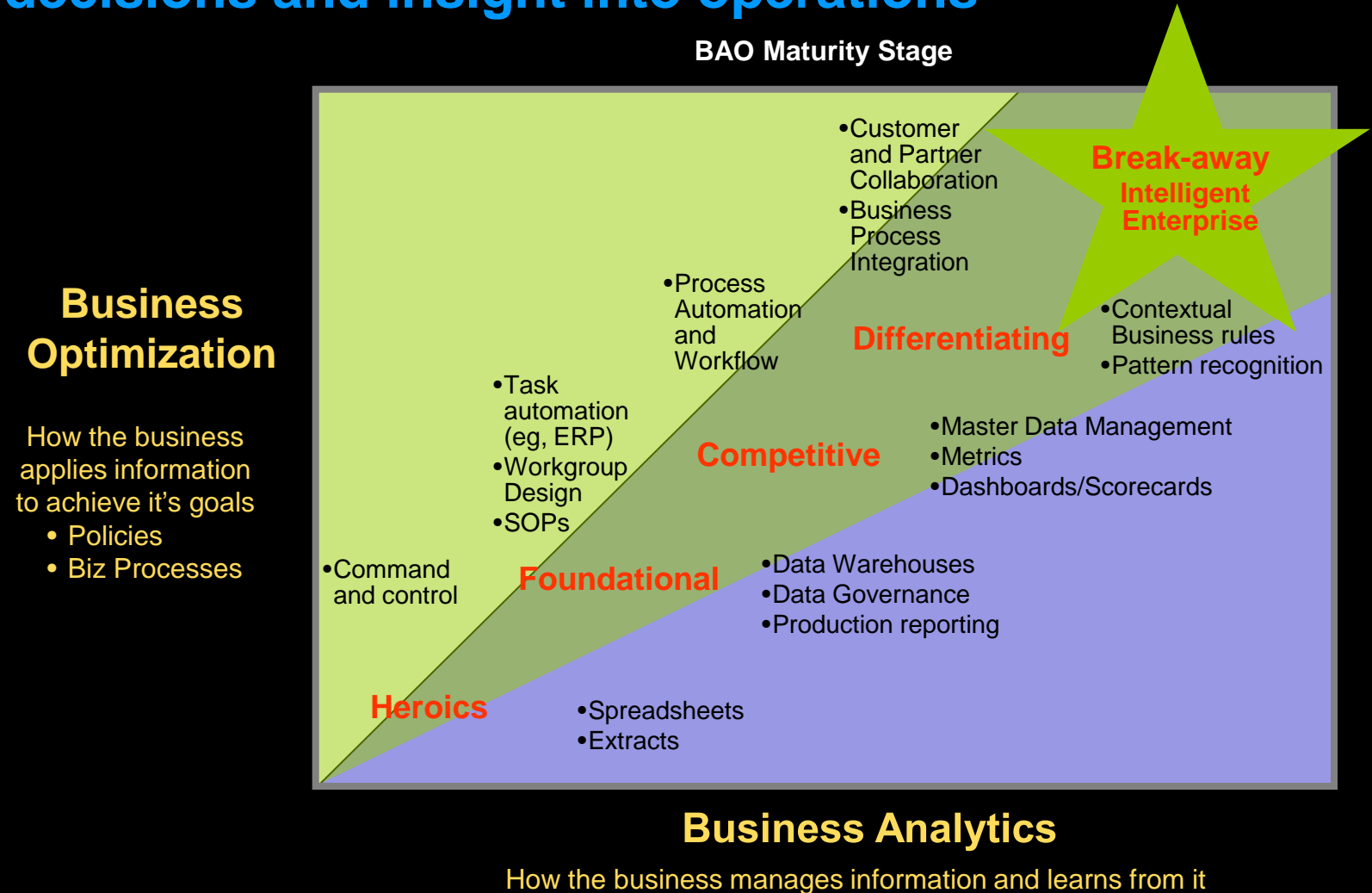


Factual-based decision-makers



Build the Intelligent Enterprise

Intelligent Enterprises integrate data into business decisions and insight into operations



Essentials for the next generation leaders



Global collaborators



Shaped like a T



Factual-based decision-makers

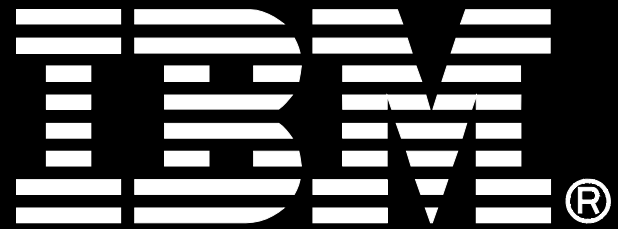


Build the Intelligent Enterprise

The Decade of Smart

- Smarter Planet: *Instrumented, Interconnected, Intelligent*
- Cities: *System of systems, key for success*
- Innovators who manage complexity and leverage intelligence will emerge as winners
- Leaders must collaborate and integrate globally,
- Leaders must be T-shaped and build an intelligent enterprise





bdileo@cn.ibm.com

